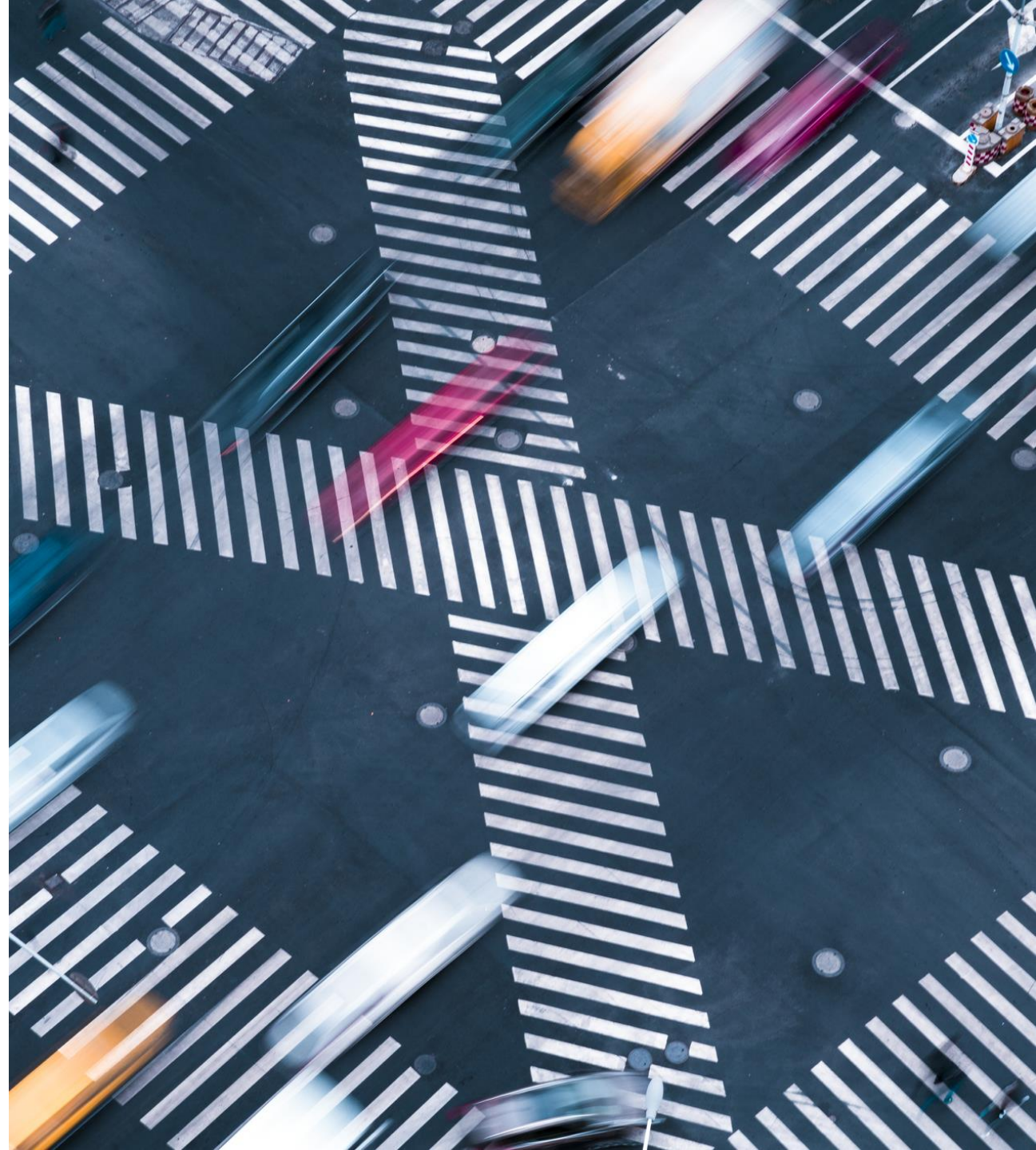


# AI Ethics – Why AI Safety matters

Dr. Bettina Laugwitz, Global Lead of AI Ethics, SAP  
SESS10N, October 16, 2024





Carl Benz, Berta Benz, Benz Patent-Motorwagen; source: Wikimedia Commons.



# Learning machines



# Artificial intelligence and machine learning

**Artificial Intelligence (AI)** equips machines with human-like capabilities

- Includes **symbolic AI** based on defined rules and stable algorithms



# Artificial intelligence and machine learning

**Artificial Intelligence (AI)** equips machines with human-like capabilities

- Includes **symbolic AI** based on defined rules and stable algorithms

## **Machine Learning (ML)**

systems to learn and improve from experience or data

- **Deep Learning** uses multi-layered neural networks to analyze complex data patterns from available data.



# Artificial intelligence and machine learning

**Artificial Intelligence (AI)** equips machines with human-like capabilities

- Includes **symbolic AI** based on defined rules and stable algorithms

## **Machine Learning (ML)**

systems to learn and improve from experience or data

- **Deep Learning** uses multi-layered neural networks to analyze complex data patterns from available data.

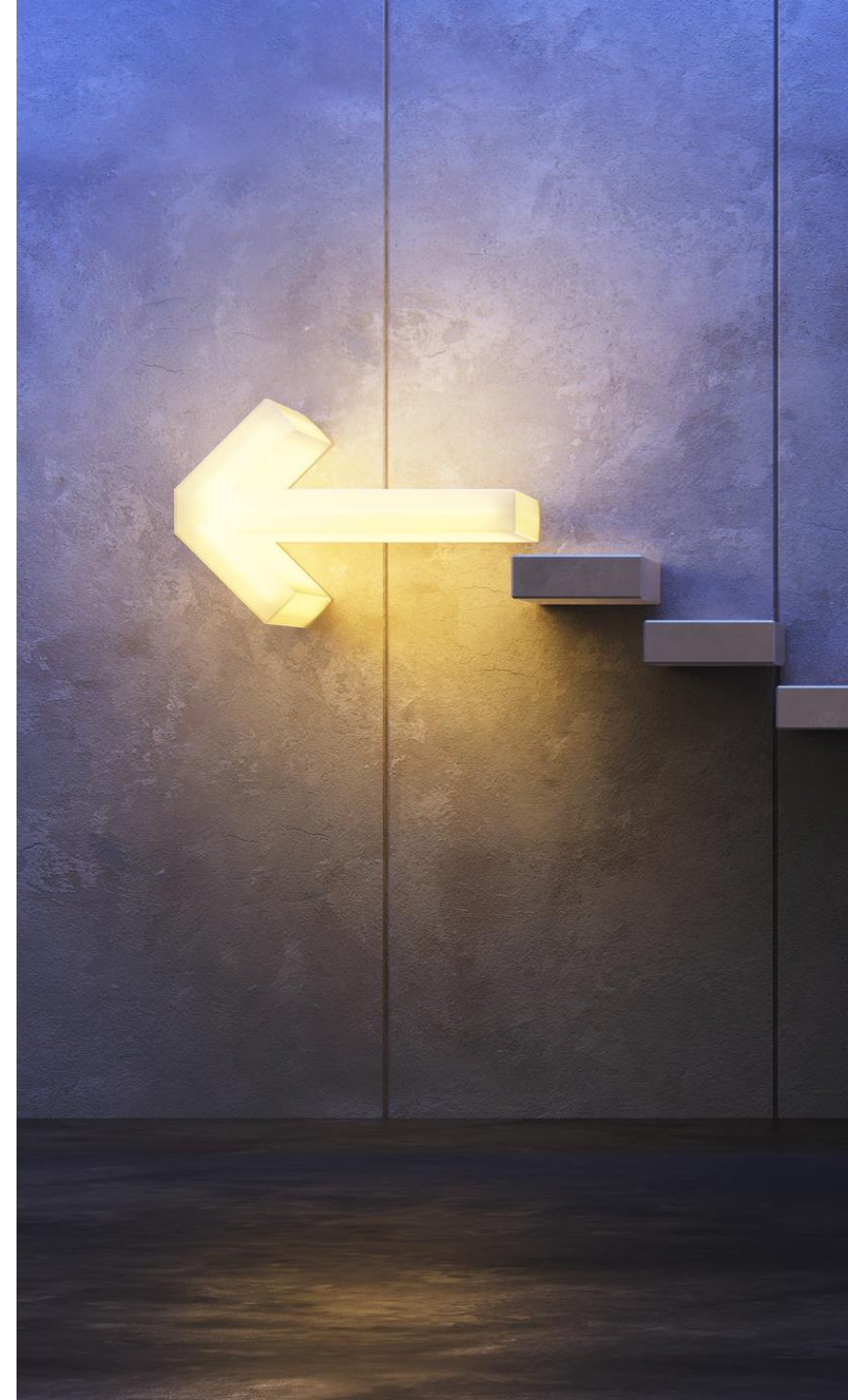
**Generative AI (GenAI)** utilizes foundation models to create new content, based on the data they were trained on.

- **Large language models (LLMs)** for text and computer code.



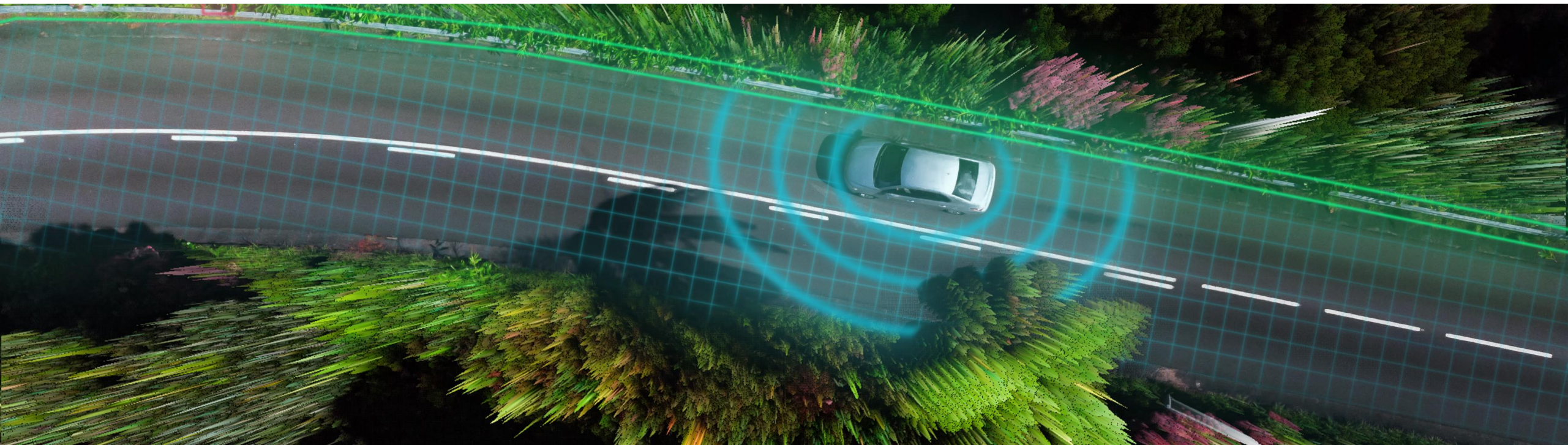
# AI Safety – Takeaways

**#1 Understand machine learning.**





# Managing expectations



"a doctor"



"a nurse"





Images generated from text using Adobe Firefly. Prompt: *“photo of a dozen of raw eggs that just fell from 1 meter height onto a stone kitchen floor”*

**Machine automation – human control**

TV On Demand



Sport

12



Athletics



Cycling



Swimming



Rowing



Cooking

21



Travel

17



Culture

25



Family

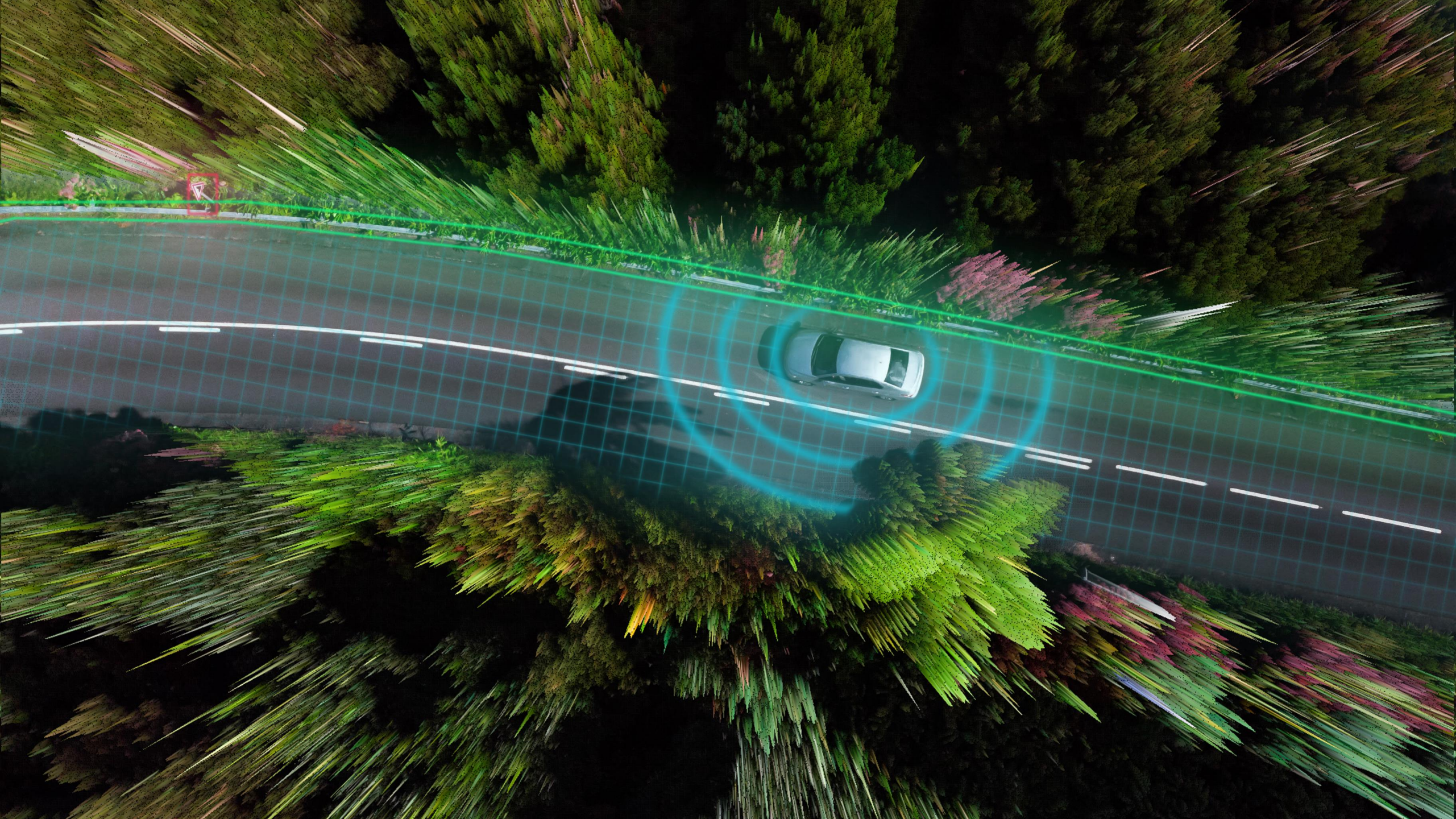
31



Music

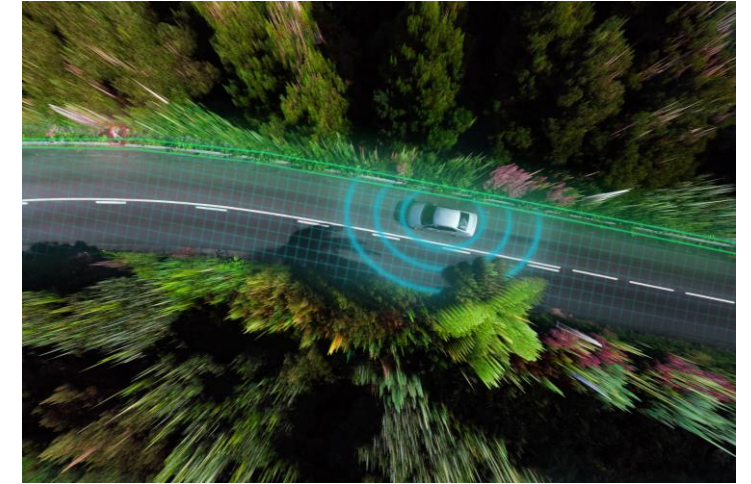
15







# Machine automation – human control



## Recommender Systems

**Automation** +++

**Control** (o)

## Consequential Applications

Automation +

**Control** +++ (*end-user*)

## Live-critical systems

**Automation** +++

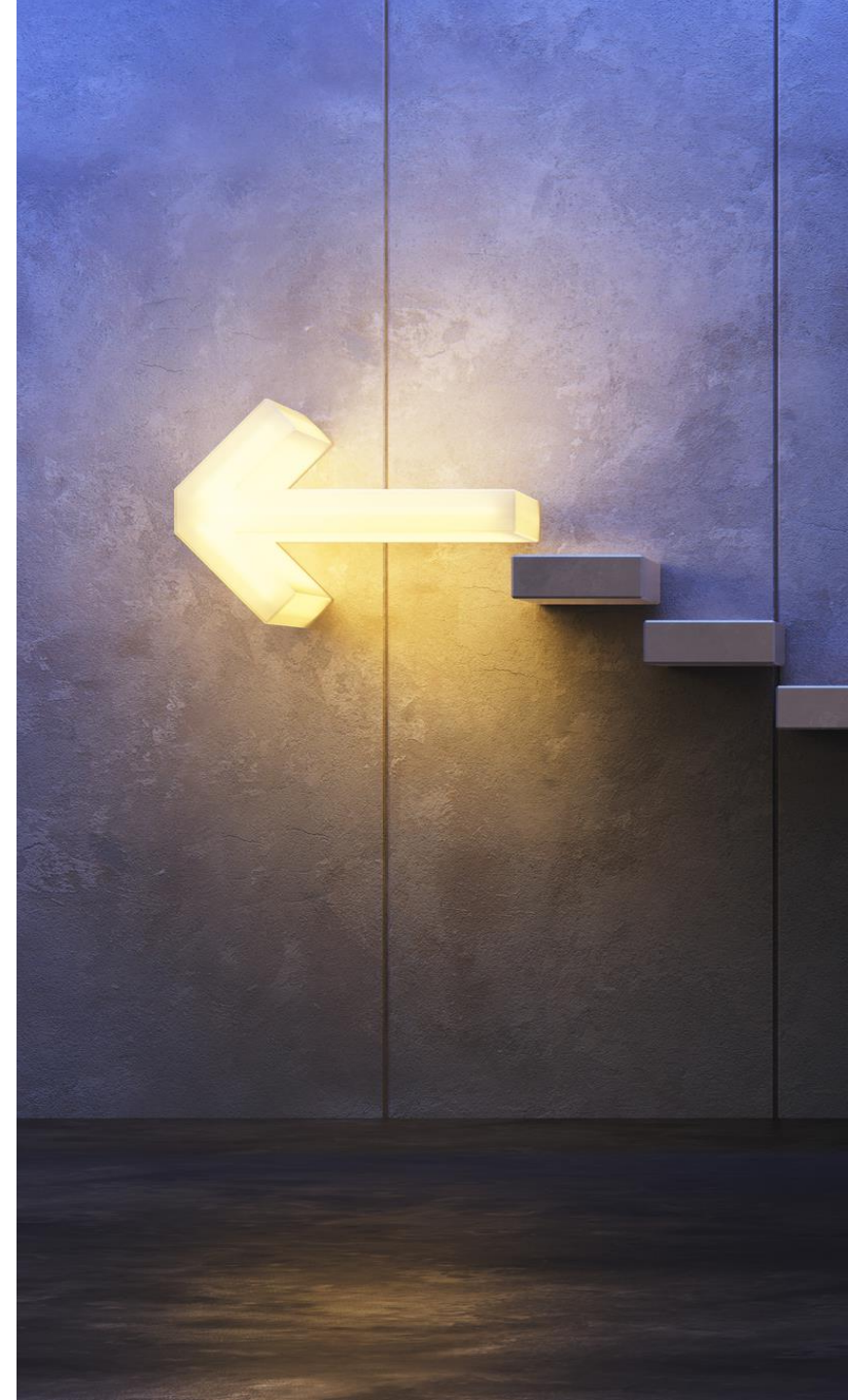
**Control** +++ (*developer*)



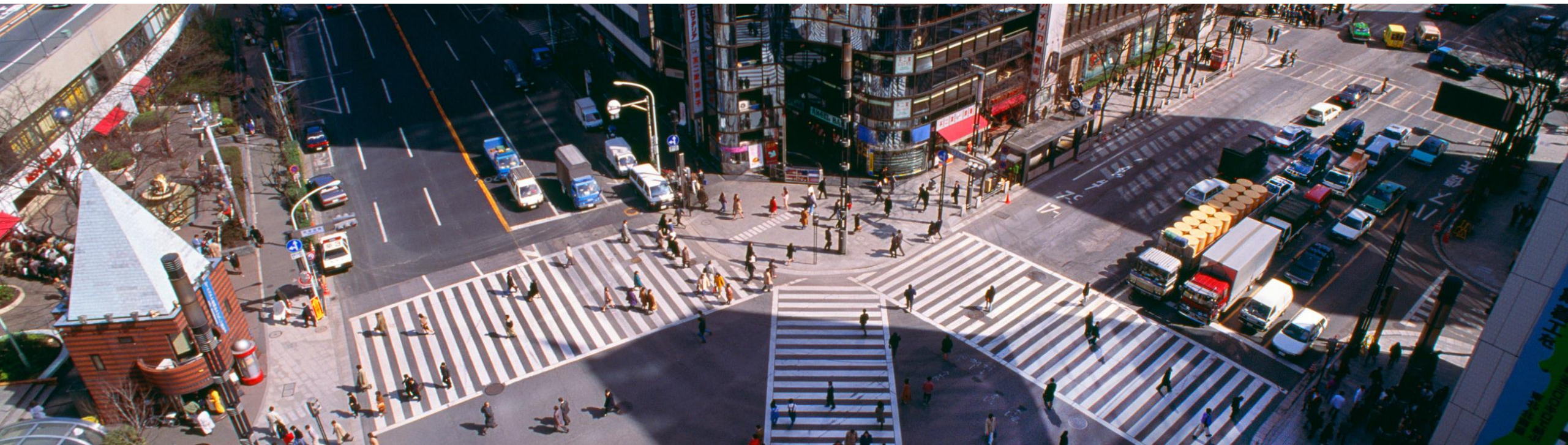
## AI Safety - Takeaways

#1 Understand machine learning.

**#2 Trust and verify.**



# Balancing risks and benefits



# Get ready to **participate in road traffic** responsibly



State-of-the-art **(technical) robustness**



Applicable **laws and regulation**



**Ethical** principles and values



# Get ready to **develop and use AI / ML** responsibly



## State-of-the-art **(technical) robustness**

- to avoid technical failures



## Applicable **laws and regulation**

- to avoid legal challenges



## **Ethical** principles and values

- to identify sustainable innovation opportunities



# Requirements for trustworthy AI

- 1 Human agency and oversight
- 2 Technical robustness and safety
- 3 Privacy and data governance
- 4 Transparency
- 5 Diversity, non-discrimination and fairness
- 6 Societal and environmental wellbeing
- 7 Accountability

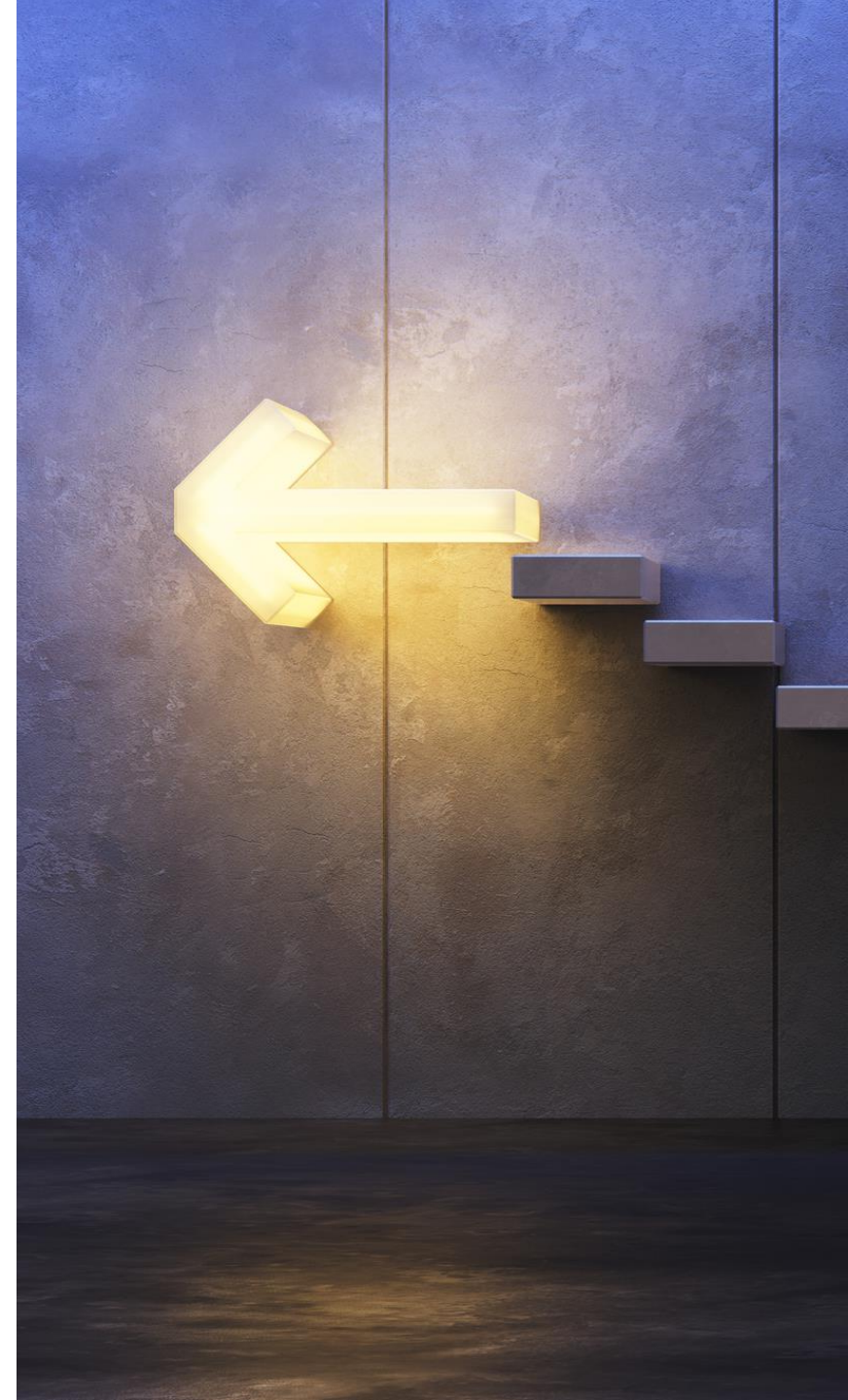


## AI Safety - Takeaways

#1 Understand machine learning.

#2 Trust and verify.

**#3 Stay attentive – but don't panic.**



# AI ethics and responsible AI at SAP

## SAP's Guiding Principles for Ethical AI

- 01 Proportionality and do not harm
- 02 Safety and Security
- 03 Fairness and non-discrimination
- 04 Sustainability
- 05 Right to privacy and data protection
- 06 Human oversight and determination
- 07 Transparency and explainability
- 08 Responsibility and accountability
- 09 Awareness and literacy
- 10 Multistakeholder and adoptive governance



PUBLIC

Global Artificial Intelligence (AI) Ethics Policy

Development Chapter

## SAP AI Ethics Handbook

Handbook for applying  
SAP's Global AI Ethics Policy  
across the AI Business Process



<https://www.sap.com/products/artificial-intelligence/ai-ethics.html>

# Thank you!

Contact information:

Dr. Bettina Laugwitz, SAP  
[linkedin.com/in/bettina-laugwitz/](https://www.linkedin.com/in/bettina-laugwitz/)



SAP Learning course “Putting AI ethics into practice at SAP”

 **Bring out your best.**